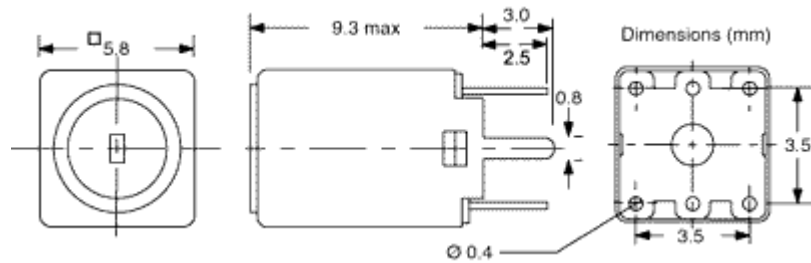
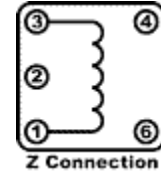


5A Series



Technical Specification

Frequency Range : 30MHz - 150MHz
 Inductance Range : 0.03mH - 0.3mH
 Temperature Coefficient : 150ppm/°C



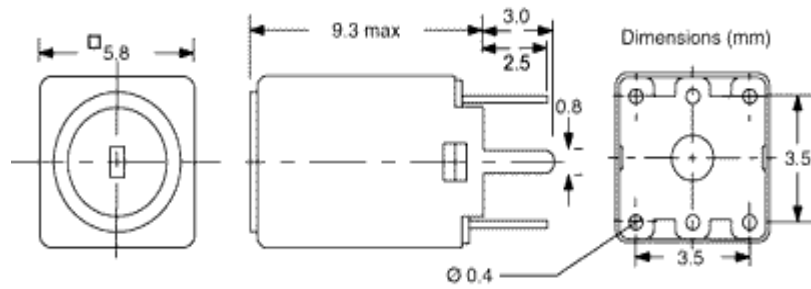
Features

- Excellent resistance to humidity, vibration and shock due to integrated moulded base and bobbin.
- Solenoid design permits the use of thicker winding wire for improved Q, minimal drift and stability in humid conditions.
- Absence of pot core makes very low inductances achievable, making this coil ideal for VHF circuits.
- The Q value is exceptionally steady throughout the tuning range.
- Optimum final tuning due to the large percentage adjustment range.
- Plated brass can providing magnetic and electrostatic shielding.
- Pre-soldered terminal pins ensure a highly reliable PCB connection.

TOKO 5A VARIABLE INDUCTORS

TOKO Ref	Inductance	Tolerance	Q min	Test Freq (MHZ)	BEC Ref
210SNS-T1005Z	0.033uH	±3%	40	100	391005
210SNS-T1006Z	0.039uH	±3%	40	100	391006
210SNS-T1007Z	0.047uH	±3%	40	100	391007
210SNS-T1008Z	0.056uH	±6%	40	100	391008
210SNS-T1009Z	0.068uH	±6%	40	100	391009
210SNS-T1010Z	0.082uH	±6%	40	100	391010
210SNS-T1011Z	0.10uH	±6%	40	75	391011
210SNS-T1012Z	0.12uH	±6%	40	75	391012
210SNS-T1013Z	0.15uH	±6%	40	75	391013
210SNS-T1014Z	0.18uH	±6%	40	75	391014
210SNS-T1015Z	0.22uH	±6%	40	75	391015
210SNS-T1016Z	0.27uH	±6%	40	75	391016
210SNS-T1017Z	0.33uH	±6%	40	75	391017

5MM Series



Features

- The smallest range of coils prior to the SMD range. Frequency range from 455kHz to 70MHz.
- Primary use in AM/FM IFs. Available in a range of inductances from 0.03uH to 122uH.

TOKO 5MM VARIABLE INDUCTORS

TOKO Ref	Freq.	Style	pins/turns	Q ±20%	Base	L	Int C	BEC Ref
5SVNR-A054GO	2MHz	5S	1-2 = 18t 2-3 = 72t 1-3 = 90t	60	3		45pF	390054
5MMCO124N	455KHz	5M	1-2 = 139t 2-3 = 50t 1-3 = 189t 4-6 = 24t	110	27		180pF	390124
210SN-171R	100MHz	5A	1-2 = 3t 2-3 = 2t 1-3 = 5t 4-6 = 2t	55	8		13pF	390171
5SLC0184R	475KHz	5A	1-2 = 137t 2-3 = 43t 1-3 = 180t 4-6 = 27t	77	7		180pF	390184
5SPC0185A	10.7MHz	5A	1-2 = 8t 2-3 = 7t 1-3 = 15t 4-6 = 1t	78	27		47pF	390185
215PN0186N	10.7MHz	5SH	1-2 = 7t 2-3 = 3t 1-3 = 10t 4-6 = 2t	67	7		ext 125pF	390186
210NSA187HM	123MHz	5A	1-3 = 5t	70	1	0.17uH		390187
210NSA189HM	148MHz	5A	1-3 = 4t	70	1	0.12uH		390189
5SLC0190N	455KHz	5S	1-2 = 58t	85	27		470pF	391900

			2-3 = 58t 1-3 = 116t 4-6 = 16t					
210SNSA190HM	180MHz	5A	1-3 = 3t	64	1	0.08uH		390190
210SNS203HM	100MHz	5A	1-3 = 6t	70	1	0.18uH		390203
215VXNA203HT	9MHz	5S	6-1 = 13.5t	75	55		ext 120pF	390205
215VNXA204HT	21.4MHz	5S	6-1 = 9.5t	70	55		ext 43pF	390204
5SPC021OZ	10.7MHz	5SH	1-3 = 15t	95	56		47pF	390210
5MMCO273N	455KHz	5M	1-2 = 114t 2-3 = 75t 1-3 = 189t 4-6 = 9t	110	7		180pF	390273
5MMC0274N	455KHz	5M	1-2 = 84t 2-3 = 105t 1-3 = 189t 4-6 = 17t	125	27		180pF	390274
5MMC0275N	455KHz	5M	1-2 = 172t 2-3 = 17t 1-3 = 189t 4-6 = 17t	120	27		180pF	390275
210SNA277AZD	100MHz	5A	4-6 = 2t 4-1 = 3.5t 6-1 = 1.5t	64	60		33.5pF	390277
210SN-A278HM	10.7	5A	1-3 = 8t	27	1		27pF	390278
210SN291Z	70MHz	5A	1-3 = 8t	50	1	0.30uH		390291
210SN352Z	150MHz	5A	1-3 = 2t	50	1	0.30uH	34pF	390352
5SVLS-A455ACA	455KHz	5S	4-6 = 200t	70	21		180pF	390455
5SVBR054OZ	796KHz	5S	1-3 = 79t	50	1	110uH		390540
5MAN-0820Z	7.96MHz	5M	1-3 = 21t	120	1	6.8uH		390820
5SVNR0837X	796KHz	5S	1-3 = 89t 4-6 = 2t	70	10	122uH		390837
215PNO0838X	2.52MHz	5S	1-3 = 46t 4-6 = 3t	85	10	30uH		390838
215PNO839X	2.52MHz	5S	1-3 = 31t 4-6 = 1t	77	10	14uH		390839
5SVNRO840Z	2.52MHz	5S	1-3 = 44t	65	1	32uH		390840

215PNO841HF	2.52MHz	5S	2-3 = 45t	90	54	30uH		390841
215PNO842Z	7.96MHz	5S	1-3 = 25t	75	1	9.65uH		390842
215PNO850Z	7.96MHz	5S	1-3 = 22t	85	1	8uH		390850
215PNO874N	7.96MHz	5S	1-2 = 2t 2-3 = 7t 1-3 = 9t 4-6 = 4t	50	7	1.4uH		390874
215PNO875N	7.96MHz	5S	1-2 = 4t 2-3 = 6t 1-3 = 10t 4-6 = 2t	60	7	1.7uH		390875
215PNO876N	7.96MHz	5S	1-2 = 11t 2-3 = 7t 1-3 = 18t 4-6 = 3t	65	7	5.24uH		390876
A210SNF-1173Z	30MHz	5A	1-3 = 16t	70	1		21.4pF	391173
A210SNF-1174RM	100MHz	5A	1-3 = 2t 1-6 = 5.5t 3-6 = 3.5t	90			11.5pF	391174
210SNS1178AN	180MHz	5A	1-3 = 3t 4-6 = 1t	48	9		9.9pF	391178
332PN1841Z	7.96MHz	5P	1-3 = 14t	80	1	3.3uH		391841
5PLC2086A	455KHz	5A	1-2 = 124t 2-3 = 51t 4-6 = 28t	50	14		180pF	392086
294SNS-2309X	142.5MHz	5K	1-3 = 4t 4-6 = 4t	58	10		16pF	392309
332PN2636BS	4.43MHz	5PH	4-6 = 36t	70	18		54pF	392636
332PC-2675JL	21.4MHz	5P	4-6 = 4t 2-3 = 8t 2-1 = 6t 1-3 = 2t	54	66		56pF	392675
5SVLN2828D	300KHz	5S	1-3 = 178t 1-2 = 89t 2-3 = 89t 4-6 = 76t 4-5 = 38t 5-6 = 38t	35	51		560pF	392828
5PNR-3111N	796KHz	5P	1-2 = 83t 2-3 = 83t 1-3 = 166t 4-6 = 11t	62	7	560uH		393111

332PN-3785R	7.96MHz	5P	1-2 = 19t 2-3 = 3t 1-3 = 22t 4-6 = 2t	65	26		27pF	393785
-------------	---------	----	--	----	----	--	------	---------------